

JDN AIR HOISTS mini

The JDN mini Series for General Duty

Carrying capacities:


125 kg, 250 kg, 500 kg, 980 kg

Air pressure: 6 bar

The **mini** widens the range of applications in the light duty sector as a handy, flexible and universally deployable hoist making it an ideal tool for a wide range of light/medium manufacturing applications. For heavier duty industrial applications we recommend the JDN PROFI series.

mini Manipulator

With the mini Manipulator loads can be lifted, lowered, manually traversed and positioned with only one hand. Further information on request.

Explosion Classification:  II 3 GD IIA T4(X)



mini 125

mini 1000
in manual trolley

mini
Manipulator

THE ADVANTAGES AT A GLANCE

- Price competitive alternative when compared to other types of powered hoists.
- Suitable for lube-free operation.
- Suitable for application in hazardous areas.
- Minimum components for ease of maintenance.
- Wear resistant motor braking system.
- Lightweight for easy handling.
- Also suitable for horizontal pulling.
- Extremely sensitive lever control with emergency shut-off valve, max. control length 6 m.
- Available lifting heights: 3 m, 5 m, 8 m.
- With chain box as standard.
- With manual trolley as option.

TECHNICAL DATA

Type		mini 125	mini 250	mini 500	mini 1000
Capacity	lbs	275	550	1100	2160
	kg	125	250	500	980
Number of chain strands		1	1	1	1
Motor output	kW	0.4	0.4	1	1
Air pressure	PSI	85	85	85	85
	bar	6	6	6	6
Lifting speed without load ¹	ft/min	130	65	65	33
	m/min	40	20	20	10
Lifting speed at full load ¹	ft/min	49.5	26	33	16
	m/min	15	8	10	5
Lowering speed at full load	ft/min	99	52	59	33
	m/min	30	16	18	10
Lowering speed without load	ft/min	78.7	39.4	39.4	19.7
	m/min	24	12	12	6
Air consumption at full load – lifting	cfm	17.5	17.5	42.5	42.5
	m ³ /min	0.5	0.5	1.2	1.2
Air consumption at full load – lowering	cfm	24.7	24.7	56.5	56.5
	m ³ /min	0.7	0.7	1.6	1.6
Air connection		G 3/8	G 3/8	G 1/2	G 1/2
Hose dimension (Ø inside)	inch.	0.35	0.35	0.5	0.5
	mm	9	9	13	13
Weight with 10 ft / 3 m lift	lbs	21	23.1	46.2	50.6
	kg	9.5	10.5	21	23
Chain dimension	mm	4 x 12	4 x 12	7 x 21	7 x 21
Weight of chain	lbs/ft	0.23	0.23	0.67	0.67
	kg/m	0.35	0.35	1.1	1.1
Height of lift	ft	10 / 16 / 26			
	m	3 / 5 / 8			
Length of control at standard lift	ft	6.5 / 13 / 20			
	m	2 / 4 / 6			
Noise level at full load ² – lifting	dB(A)	79	79	77	77
Noise level at full load ² – lowering	dB(A)	80	80	83	83

Group mechanism: M3 (1 Bm)

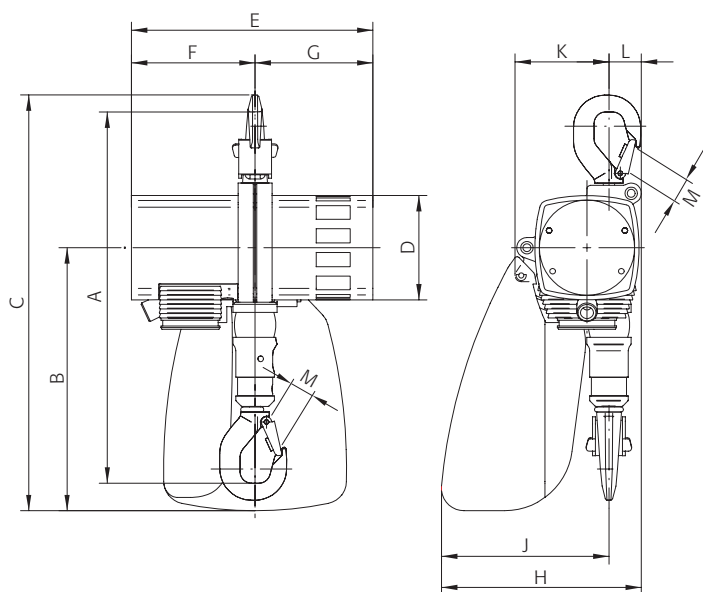
¹ Lifting speed at 2 m length of control. Longer control hoses decrease the lifting speeds.

² Measured at 1 m distance acc. to DIN 45635 part 20



DIMENSIONS

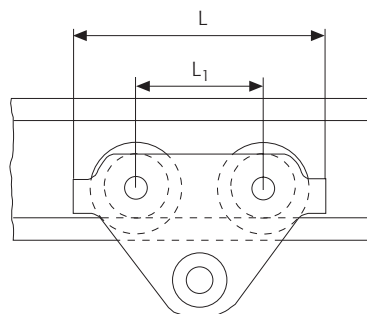
Type		mini 125	mini 250	mini 500	mini 1000
A	inch. mm	12.9 328	12.9 328	18.0 458	18.0 458
B	inch. mm	9.1 232	9.1 232	12.4 316	12.4 316
C	inch. mm	14.4 367	14.4 367	19.9 505	19.9 505
D	inch. mm	3.6 92	3.6 92	4.8 122	4.8 122
E	inch. mm	8.4 213	8.4 213	11.5 292	11.5 292
F	inch. mm	4.3 109	4.3 109	5.8 148	5.8 148
G	inch. mm	4.1 104	4.1 104	5.6 144	5.6 144
H	inch. mm	7 177	7 177	9.2 234	9.2 234
J	inch. mm	5.8 148	5.8 148	7.6 194	7.6 194
K	inch. mm	3.3 83	3.3 83	4.7 119	4.7 119
L	inch. mm	1.1 29	1.1 29	1.6 40	1.6 40
M	inch. mm	0.7 19	0.7 19	1.1 28	1.1 28



MANUAL TROLLEYS FOR JDN AIR HOISTS mini

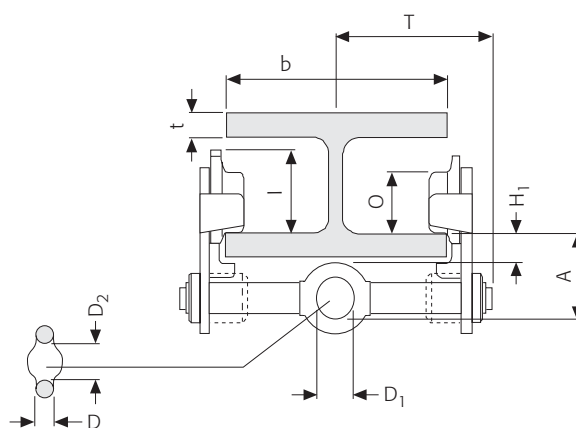
TECHNICAL DATA

Type		LN 500	LN 1000
For use with:		mini 125 mini 250	mini 500 mini 1000
Beam flange width b	inch. mm	2 - 8 50 - 220	2 - 8 58 - 220
max. flange thickness t	inch. mm	1.3 34	1.2 30
min. curve radius	inch. m	35.4 0.9	39.4 1.0
Weight	lbs kg	17 7.7	21 10.5



DIMENSIONS

Type		LN 500	LN 1000
A	inch. mm	3.1 79.5	3.1 79
D	inch. mm	0.7 17	0.7 17
D1	inch. mm	1 25	1.2 30
D2	inch. mm	1.2 30	1.4 35
H1	inch. mm	1.2 30	1 25
I	inch. mm	2.7 67.5	3.2 81.5
L	inch. mm	10.2 260	10.2 260
L1	inch. mm	5.1 130	5.1 130
O	inch. mm	2.2 55	2.7 68
T	inch. mm	5.7 144	5.9 151



Carrying capacities: 250 kg up to 100 t

Air pressure: 4 bar or 6 bar

Proven in practice: JDN Air Hoists **PROFI** Series are superior in all places where safety has priority. Unlike electric current, the compressed air power driving medium does not produce any ignition risk. This important advantage ensures JDN Air Hoists are especially suitable for applications in hazardous areas.

JDN Air Hoists **PROFI** Series are very robust and therefore suitable for tough industrial applications even in continuous working processes. According to your requirements there are various control systems available. For traversing loads there are also different trolley designs to meet your particular demands.

Where the JDN PROFI excellence has been proven

Aircraft construction, assembly lines, chemical industry, dairies, electro plating, explosives and pyrotechnics industry, food industry, foundries, furniture industry, glass industry, lacquer and varnish factories, match industry, mechanical engineering, auto industry, oil storage plants, on- and offshore, paint shops, paper industry, power plants, refineries, sawmills, shipyards, space industry, tempering plants, textile industry.

STANDARD FEATURES

- Suitable for application in hazardous areas
- Sensitive infinitely variable speed control for the precise positioning of loads
- Easy operation
- Suitable for lube-free operation
- Frequent switching and extended duty cycles
- Low maintenance
- Low headroom, lightweight
- Sound absorption
- Insensitive to dust, humidity and temperatures ranging from -20°C up to +70°C
- From 1 t upwards with overload protection (EC-version)
- Low sound emissions

TECHNICAL DETAILS

- Fail-safe starting, low maintenance vane motor
- Chain sprocket in the mid section runs in dust-proof maintenance-free ball bearings
- Planetary gear box with long-life grease lubrication, all gears made of tempered or hardened high-grade steel
- Load chain and hooks manufactured from high quality tempered steels with a breaking strength of five times the nominal load

THE ADVANTAGES AT A GLANCE

Strong – Fast – Silent

High performance with more efficiency by reliability plus high lifting and lowering speeds. Low sound emissions.

High Level of Safety

Integrated emergency stop switch in the main air supply*
From 1 t upwards with overload protection.

Oil-Free Operation

Patented, permanent motor lubrication during operation, using a high-performance grease. No additional motor lubrication required.

Patented Motor-Brake System

For operation with low maintenance and little wear. Based on the proven design of the JDN Mini Series.

Modern Design – Compact Size


Features no protruding control hoses or parts susceptible to damage, making the new PROFI also suitable for horizontal pulling.

100 % Duty Rating – No Downtime

Suited For Application In Hazardous Areas

According to EC Directive on Hazardous Locations 94/9/EEC

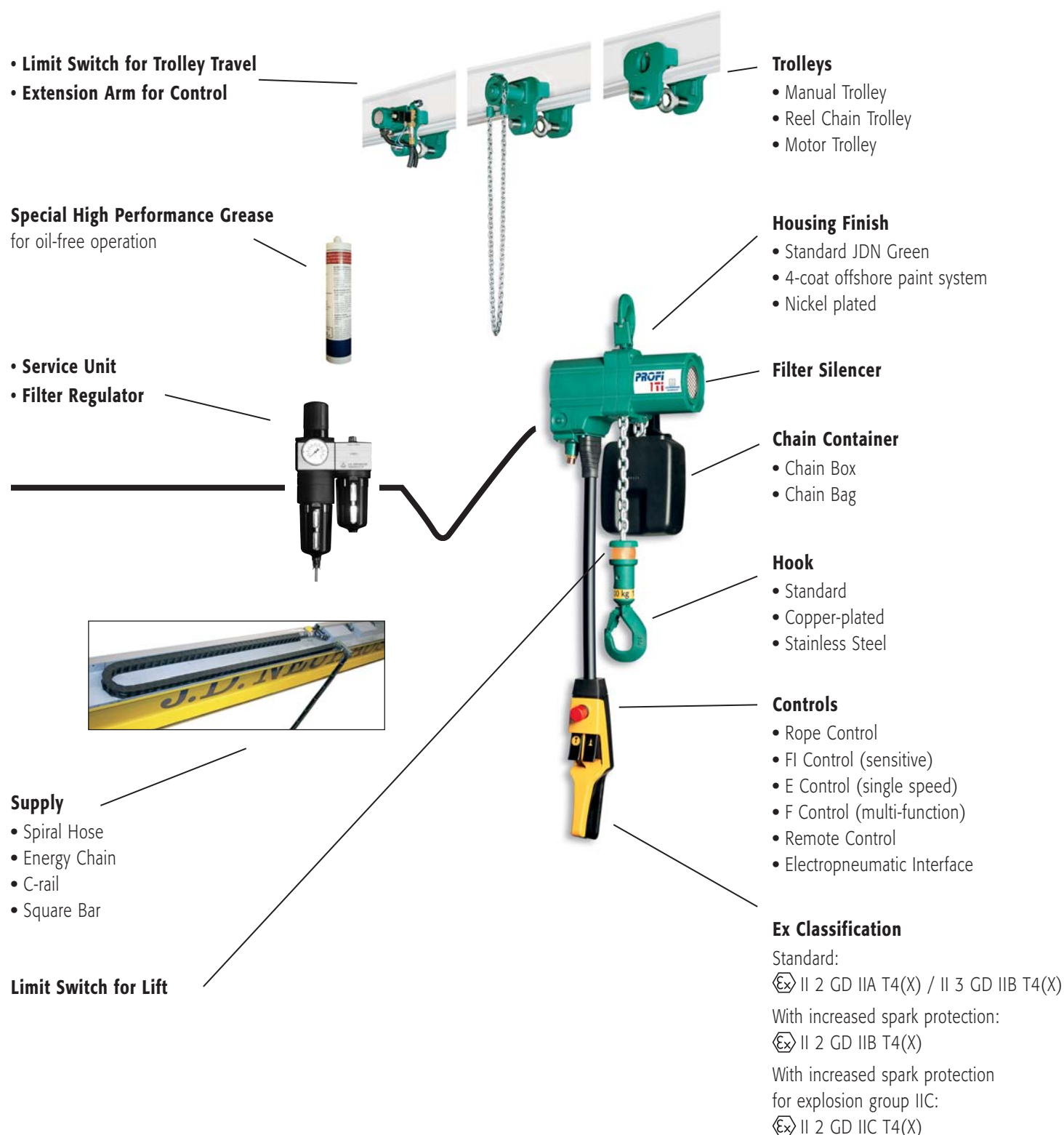
As standard:  II 2 GD IIA T4(X) / II 3 GD IIB T4(X)

With increased spark protection:  II 2 GD IIC T4(X)

*Up to PROFI 20 TI



The modular system at a glance



PROFI 025 TI - 2 TI

TECHNICAL DATA

Type		025 TI		05 TI		1 TI		2 TI			
Air pressure	PSI bar	65 4	85 6	65 4	85 6	65 4	85 6	65 4	85 6		
Carrying capacity	mt	0.16	0.25	0.32	0.5	0.63	1	1.25	2		
Number of chain strands		1		1		1		2			
Motor output	kW	0.6	1	0.6	1	0.6	1	0.6	1		
Lifting speed at full load	ft/min m/min	65.6 20		32.8 10		36.1 11		16.4 5		18 5.5	
Lifting speed without load	ft/min m/min	123 37.5	137.8 42	52.5 16	62.3 19	32.8 10	36.1 11	16.4 5	18 5.5		
Lowering speed at full load	ft/min m/min	124.7 38		55.8 17		32.8 10		36.1 11		16.4 5	
Air consumption at full load - lifting	cfm m ³ /min	24.7 0.7	42.4 1.2	24.7 0.7	42.4 1.2	24.7 0.7	42.4 1.2	24.7 0.7	42.4 1.2		
Air consumption at full load - lowering	cfm m ³ /min	28.3 0.8	53 1.5	28.3 0.8	53 1.5	28.3 0.8	53 1.5	28.3 0.8	53 1.5		
Air connection		G 1/2		G 1/2		G 1/2		G 1/2			
Hose dimension (ø inside)	inch. mm	0.5 13		0.5 13		0.5 13		0.5 13			
Weight with standard lift height and control length	lbs kg	59.5 27		59.5 27		61.6 27.5	61.7 ¹ 28 ¹	75 ¹ 34 ¹			
Chain dimension	mm	7 x 21		7 x 21		7 x 21		7 x 21			
Weight of 1 m chain	lbs kg	2.2 1		2.2 1		2.2 1		2.2 1			
Standard lift	ft m	10 3		10 3		10 3		10 3			
Length of control at standard lift	ft m	6.5 2		6.5 2		6.5 2		6.5 2			
Noise level at full load ² - lifting	dB(A)	73	74	74	75	74	76	74	76		
Noise level at full load ² - lowering	dB(A)	77	78	77	78	77	78	77	78		

Group mechanism at 6 bar: PROFi 025TI M5 (2m), PROFi 05TI - PROFi 2TI M4 (1Am)

¹ With overload protection ² Measured at 1 m distance acc. to DIN 45635 part 20

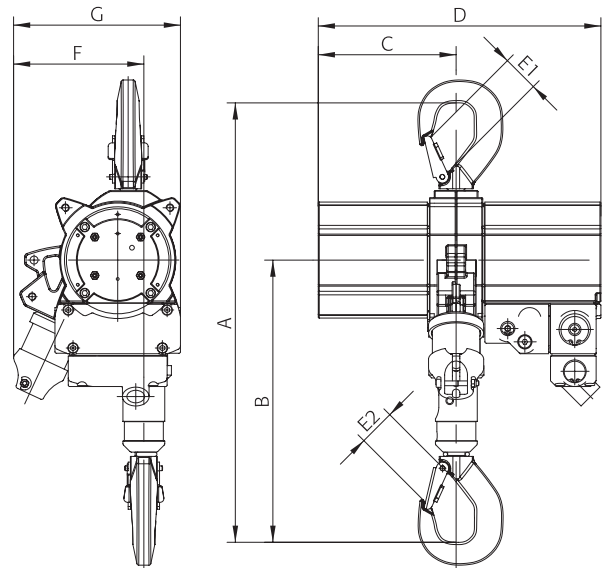


PROFi 1 TI

DIMENSIONS

Type		025 TI	05 TI	1 TI	2 TI
A min. headroom ¹	inch. mm	17.7 450	17.7 450	17.7 450	19.6 498
B	inch. mm	11.3 288	11.3 288	11.3 288	13.2 336
C	inch. mm	5.7 145	5.7 145	5.7 145	5.7 145
D	inch. mm	11.7 297	11.7 297	11.7 297	11.7 297
E1	inch. mm	1.1 28	1.1 28	1.1 28	1.1 28
E2	inch. mm	1.1 28	1.1 28	1.1 28	1.1 28
F up to hook centre	inch. mm	5.4 137	5.4 137	5.4 137	5.4 137
G maximum width	inch. mm	6.9 176	6.9 176	6.9 176	7.2 183

¹ Chain containers increase the hoist headroom



PROFI 3 TI - 20 TI

TECHNICAL DATA

Type		3 TI		6 TI		10 TI		16 TI		20 TI	
Air pressure	PSI bar	65 4	85 6	65 4	85 6	65 4	85 6	65 4	85 6	65 4	85 6
Capacity	mt	3.2		6.3		10		16		20	
Number of chain standards		1		2		2		3		4	
Motor output	kW	1.8	3.5	1.8	3.5	1.8	3.5	1.8	3.5	1.8	3.5
Lifting speed without load	ft/min m/min	19.7 6	32.8 10	9.8 3	16.4 5	6.6 2	10.5 3.2	4.3 1.3	6.6 2	3.3 1	4.6 1.4
Lifting speed at full load	ft/min m/min	8.2 2.5	16.4 5	3.9 1.2	8.2 2.5	2.6 0.8	5.2 1.6	1.6 0.5	3.3 1	1.3 0.4	2.3 0.7
Lowering speed at full load	ft/min m/min	24.6 7.5	35.4 10.8	11.8 3.6	17.7 5.4	8.2 2.5	11.2 3.4	5.3 1.6	6.9 2.1	3.9 1.2	5.3 1.6
Air consumption at full load – lifting	cfm m ³ /min	71 2	142 4	71 2	142 4	71 2	142 4	71 2	142 4	71 2	142 4
Air consumption at full load – lowering	cfm m ³ /min	124 3.5	195 5.5	124 3.5	195 5.5	124 3.5	195 5.5	124 3.5	195 5.5	124 3.5	195 5.5
Air connection		G 3/4		G 3/4		G 3/4		G 3/4		G 3/4	
Hose dimension (Ø inside)	inch. mm	0.7 19		0.7 19		0.7 19		0.7 19		0.7 19	
Weight with standard lift height and control length	lbs kg	189.6 86		242.5 110		343.9 156		529.1 240		627 285	
Chain dimension	mm	13 x 36		13 x 36		16 x 45		16 x 45		16 x 45	
Weight of chain	lbs/ft kg/m	2.6 3.8		2.6 3.8		3.9 5.8		3.9 5.8		3.9 5.8	
Standard lift	ft m	10 3		10 3		10 3		10 3		10 3	
Length of control at standard lift	ft m	6.5 2		6.5 2		6.5 2		6.5 2		6.5 2	
Noise level at full load ¹ - lifting	dB(A)	74	78	74	78	74	78	74	78	74	78
Noise level at full load ¹ - lowering	dB(A)	79	80	79	80	79	80	79	80	79	80



PROFI 6 TI

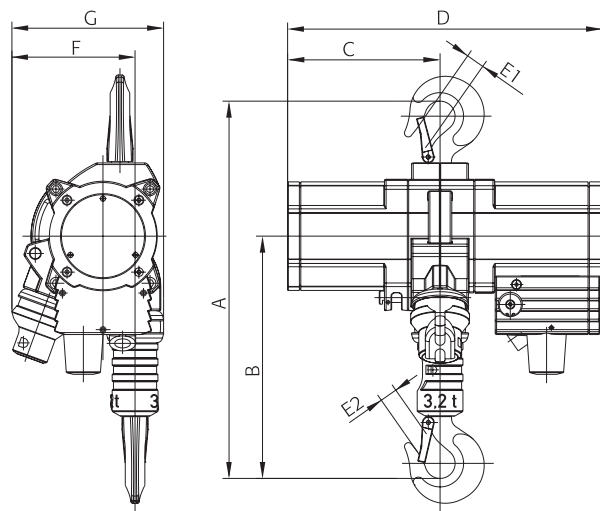
Group mechanism at 6 bar: M3 (1 Bm)

¹ Measured at 1 m distance acc. to DIN 45635 part 20

DIMENSIONS

Type		3 TI	6 TI	10 TI	16 TI	20 TI
A min. headroom ¹	inch. mm	23.3 593	26.5 674	32 813	35.4 898	40.6 1030
B	inch. mm	14.7 373	17.9 454	21.6 548	23.5 598	26.4 670
C	inch. mm	9.2 233	9.2 233	12.1 308	15 382	15 382
D	inch. mm	19 483	19 483	22.6 575	27.2 692	27.2 692
E1	inch. mm	1.6 40	1.6 40	1.7 44	2.1 53	3 75
E2	inch. mm	1.2 30	1.6 40	1.7 44	2.1 53	3 75
F up to hook centre	inch. mm	7.4 187	6.1 154	7.8 197	7.8 199	7.1 180
G maximum width	inch. mm	9.2 233	9.2 233	12 306	12.1 308	12.4 315

¹ Chain containers increase the hoist headroom



PROFI 25 TI - 100 TI

TECHNICAL DATA

Type		25 TI	37 TI		50 TI		100 TI
Air pressure	PSI	85	65	85	65	85	85
	bar	6	4	6	4	6	6
Capacity	mt	25	37.5		50		100
Number of chain standards		2	3		4		4
Motor output	kW	6	4	6	4	6	10
Lifting speed without load	ft/min	7.5	1.1	3.6	2.3	4.3	2.3
	m/min	2.3	1.1	1.6	0.7	1.3	0.7
Lifting speed at full load	ft/min	3.6	1.3	2.1	1.1	0.9	1.1
	m/min	1.1	0.4	0.7	0.3	0.5	0.4
Lowering speed at full load	ft/min	6.2	3.3	4.9	2.9	4.6	2.6
	m/min	1.9	1.0	1.5	0.9	1.4	0.8
Air consumption at full load - lifting	cfm	194.8	166.4	194.8	166.4	194.8	389.5
	m ³ /min	5.5	4.7	5.5	4.7	5.5	11
Air consumption at full load - lowering	cfm	230	194.8	230	198.2	230	424.9
	m ³ /min	6.5	5.5	6.5	5.6	6.5	12
Air connection		G1	G1		G1		G 1 1/2
Hose dimension (Ø inside)	inch.	1.0	1.0		1.0		1.4
	mm	25	25		25		35
Weight with standard lift height and control length	lbs	1098	1936		1885		5423
	kg	498	880		855		2460
Chain dimension	mm	23.5 x 66		23.5 x 66		32 x 90	
Weight of 1 m (3.28 ft) chain	lbs/ft	8.2	8.2		8.2		14.3
	kg/m	12.2	12.2		12.2		21.3
Standard lift	ft	10	10		10		10
	m	3	3		3		3
Length of control at standard lift	ft	6.5	6.5		6.5		6.5
	m	2	2		2		2
Noise level at full load ¹ - lifting	dB(A)	83	77	83	77	83	88
Noise level at full load ¹ - lowering	dB(A)	83	79	83	79	83	89

Group mechanism at 6 bar: PROFI 25 TI - PROFI 50 TI M3 (1 Bm), PROFI 100 TI M2 (1 Cm)
 Versions with 4 bar for PROFI 25 TI and PROFI 100 TI on request.

¹ Measured at 1 m distance acc. to DIN 45635 part 20

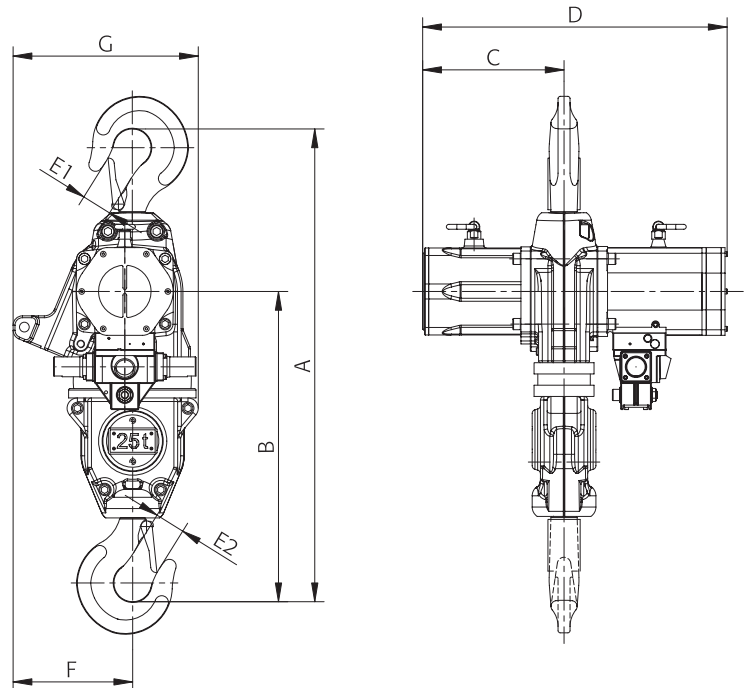


PROFI 100 TI

DIMENSIONS

Type		25 TI	37 TI	50 TI	100 TI
A min. headroom ¹	inch.	49.6	55.2	67	86.6
	mm	1260	1400	1700	2200
B	inch.	32.6	34.3	45	58.1
	mm	827	869	1144	1475
C	inch.	14.8	14.8	18.2	28.9
	mm	377	377	463	734
D	inch.	32	32	38.6	59.3
	mm	812	812	980	1505
E1	inch.	2.9	4.05	4.1	4.7
	mm	75	103	103	120
E2	inch.	2.9	4.05	4.1	4.7
	mm	75	103	103	120
F up to hook centre	inch.	12.6	20.4	12.2	17.3
	mm	318	518	310	440
G maximum width	inch.	19.2	29.4	21.2	30.2
	mm	488	745	539	767

¹ Chain containers increase the hoist headroom



JDN AIR HOISTS M SERIES

Carrying capacities: 1 t up to 6 t

Air pressure: 4 bar

JDN Air Hoists of the **M series** were originally developed for underground mining operations. Due to their versatility they are nowadays also deployed in many different industrial fields. Generally they have the same features as the hoists of the PROFI series but operate with an air pressure of only 4 bar. Two different control systems are available.

FURTHER SIGNIFICANT FEATURES AS STANDARD:

- Suitable for use in hazardous areas with risk of explosion
- Two chain falls for alternate working
- Specially designed for horizontal moving of loads

TECHNICAL DATA

Type		M 64	M 63 D
Carrying capacity	mt	1/2	3/6
Number of chain strands		1/2	1/2
Motor output	kW	0.77	1.3
Air pressure	PSI bar	65 4	65 4
Lifting speed at full load*	ft/min m/min	9.8/4.9 3/1.5	7.2/3.6 2.2/1.1
Lifting speed without load*	ft/min m/min	26.3/13.1 8/4	16.4/8.2 5/2.5
Lowering speed at full load*	ft/min m/min	41/21.3 12.5/6.5	19.7/9.8 6/3
Air consumption at full load - lifting	cfm m ³ /min	35.3 1.0	77.7 2.2
Air consumption at full load - lowering	cfm m ³ /min	70.6 2.0	113 3.2
Air connection		Rd 32 x 1/8"	Rd 32 x 1/8"
Hose dimension (Ø inside)	inch. mm	0.75 19	0.75 19
Weight with standard lift height and control length	lbs kg	132.3 60	220.5 100
Weight without chain, without control	lbs kg	68.3 31	112.4 51
Chain dimension	mm	9 x 27	13 x 36
Weight of 1 m (3.28 ft) chain	lbs kg	4 1.8	8.4 3.8
Heights of lift	ft m	16.4/8.2 5/2.5	16.4/8.2 5/2.5
Length of control	ft m	6.6 2	6.6 2
Noise level at full load ¹	dB(A)	75 - 84	79 - 83

Group mechanism: M3 (1 Bm)

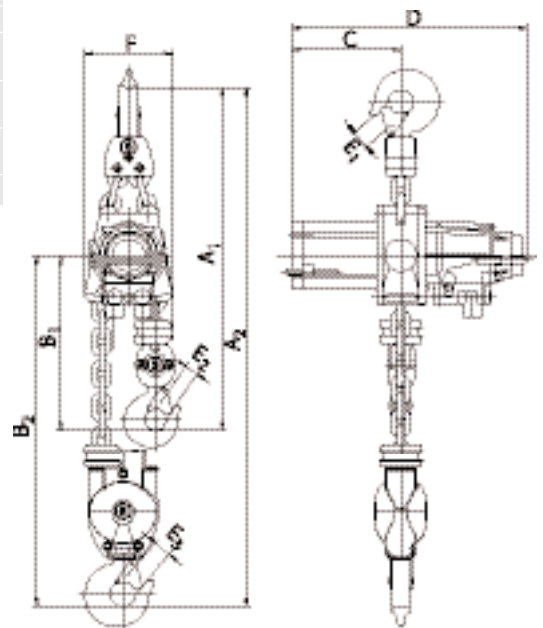
¹ Measured at 1 m distance acc. to DIN 45635 part 20

DIMENSIONS

Type		M 64	M 63 D
A1 (smallest headroom with 1/1 chain strands)	inch. mm	23.7 603	29.5 750
A2 (smallest headroom with 1/2 chain strands)	inch. mm	26 660	34.3 870
B1 (with 1/1 chain strands)	inch. mm	12.3 313	14.6 370
B2 (with 1/2 chain strands)	inch. mm	14.6 370	19.3 490
C	inch. mm	6.9 175	9.33 237
D	inch. mm	14.8 375	20 507
E1 (Hook opening)	inch. mm	1.2 30	1.6 40
E2 (Hook opening)	inch. mm	1.2 30	1.6 40
E3 (Hook opening)	inch. mm	1.2 30	1.2 30
F (maximum width)	inch. mm	5.7 144	7.7 195



M 63 D



J. D. NEUHAUS
powered by air!

Carrying capacities: up to 20 t

JDN Trolleys are available for all hoists of the PROFI and M series:

- As manual trolleys (LN) for pushing or pulling the trolleys by hand
- As reel chain trolleys (LH) for moving the trolleys by operating the reel chain mechanism
- As motorised trolley (LM) powered by an air motor

STANDARD FEATURES

- Easy to install
- With anti-climb and anti-drop devices
- Robust manufacture requiring little maintenance
- Able to negotiate curves

OPTIONS

- Rack and pinion drive
- Spark-resistant package
- Offshore paint

ENERGY FEEDING SYSTEMS

The air supply can be fed by various systems:

- Energy chain
- C-rail
- Square rail
- Spiral hose
- Hose trolleys

TECHNICAL DATA

The designation of the trolley is composed of the short code (LN, LH, LM) and the carrying capacity acc. to table, as for example LN 1t.

JDN Air Hoist PROFI	Type	025 TI	05 TI	1 TI	2 TI	3 TI	6 TI	10 TI	16 TI	20 TI	
Carrying capacity of trolley LN	mt	0.5		1	2	3.2	6.3	10-16			
Carrying capacity of trolley LH and LM	mt	2				3.2	6.3	10-16			
Carrying capacity of hoist with trolley	mt	0.25	0.5	1	2	3.2	6.3	10	16	20	
Weight of Manual Trolley (LN)	lbs kg	17 7.7		23.1 10.5	39.6 18	57.2 26	257.4 117	264 120		–	
Weight of Reel Chain Trolley (LH)	lbs kg	57.2 26				81.4 37	279.4 127	418.9 190		573.2 260	
Weight of Motor Trolley (LM)	lbs kg	70.4 32				72.6 33	272.8 124	418.9 190		573.2 260	
Hoist weight, standard lift	lbs kg	59.5 27	59.5 27	61.7 28	75 34	189.2 86	242 110	343.2 156	528 240	– 285	
Total weight with standard lift Manual Trolley	lbs kg	76.5 34.7	76.5 34.7	84.9 38.5	114.6 52	246.4 112	499.2 227	607.2 276	792 360	–	
Total weight with standard lift Reel Chain Trolley	lbs kg	130.1 59	130.1 59	132.3 60	145.5 66	270.6 123	521.4 237	762.8 346	948 430	1201.5 545	
Total weight with standard lift Motor Trolley	lbs kg	116.8 53	116.8 53	119.1 54	132.3 60	261.8 119	514.8 234	762.8 346	948 430	1201.5 545	
Weight of 1 m (3.28 ft) chain	lbs kg	0.7 1				2.6 3.8		3.9 5.8			
Number of chain strands		1			2	1	2	2	3	4	
Chain dimension	mm	7 x 21				13 x 36		16 x 45			
Air pressure Motor Trolley	PSI bar						85 6				
Air consumption Motor Trolley (at full load)	cfm m ³ /min	21.3 0.6					46.1 1.3				
Air consumption hoist (at full load)	cfm m ³ /min	53 1.5				194.2 5.5					
Motor output Motor Trolley	kW	0.2					0.7				
Motor output hoist	kW	1				3.5					
Travelling distance Reel Chain Trolley, chain reel off	30 ft 10 m	4.6 1.4					3.6 1.1		3.3 1.0		
Travelling speed Motor Trolley (at full load)	ft/min m/min	29.5* / 14 9* / 14					16.4* / 12 5* / 12				
Hose connection Motor Trolley		G 1/2					G 3/4				
Minimum radius Manual Trolley	ft m	3 ¹ 0.9 ¹	3.3 ¹ 1.0 ¹	3.9 ¹ 1.2 ¹	1.6 ²	3.3 ² 1 ²		–			
Minimum radius Reel Chain Trolley and Motor Trolley	ft m	1.6 ² 0.5 ²					3.3 ² 1 ²		4.9 ² 1.5 ²		
Max. bottom flange thickness t Manual Trolley	inch. mm	1.2 30	1.0 25	1.1 28	1.6 40	2.6 65		–			
Max. bottom flange thickness t Reel Chain and Motor Trolley	inch. mm	1.6 40					2.6 65		–		
Max. bottom flange width b Manual Trolley	inch. mm	8.7 220			12 305	12.2 310		–			
Max. bottom flange width b Reel Chain and Motor Trolley	inch. mm	11 280					12.2 310		–		
Min. bottom flange width b Manual Trolley	inch. mm	2 50	2.3 58	2.6 66	2.1 54	4.9 125		–			
Min. bottom flange width b Reel Chain and Motor Trolley	inch. mm	2 50			2.1 54	4.9 125		5.8 148			
Noise level at Motor Trolley ³	dB(A)						80				

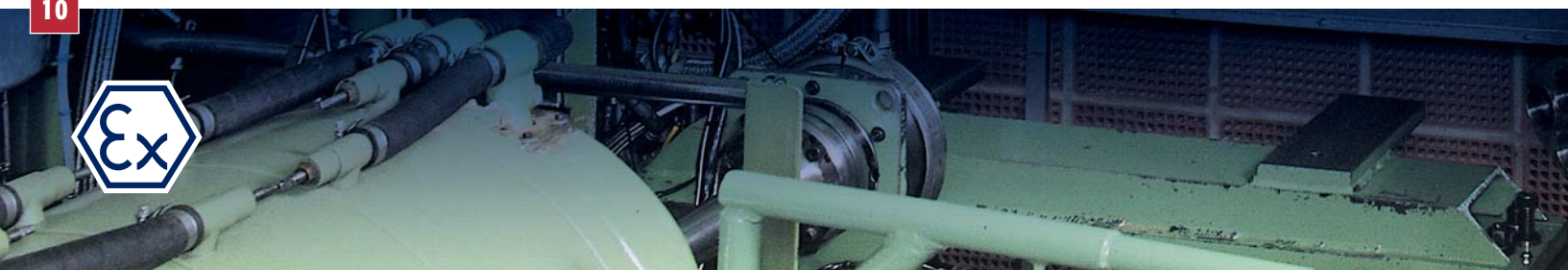
* 1st speed of F control with two speeds

¹ Measured at the middle of the beam

² Measured at the inner edge of the beam

³ Measured at 1 m distance acc. to DIN 45635 part 20

- Capacities over 20t see JDN Monorail Air Hoists page 32
- Versions with one and two hooks (e.g. BBH) see page 26
- Low Headroom Trolleys for restricted headrooms see page 28



PROFI in Manual Trolley (LN)

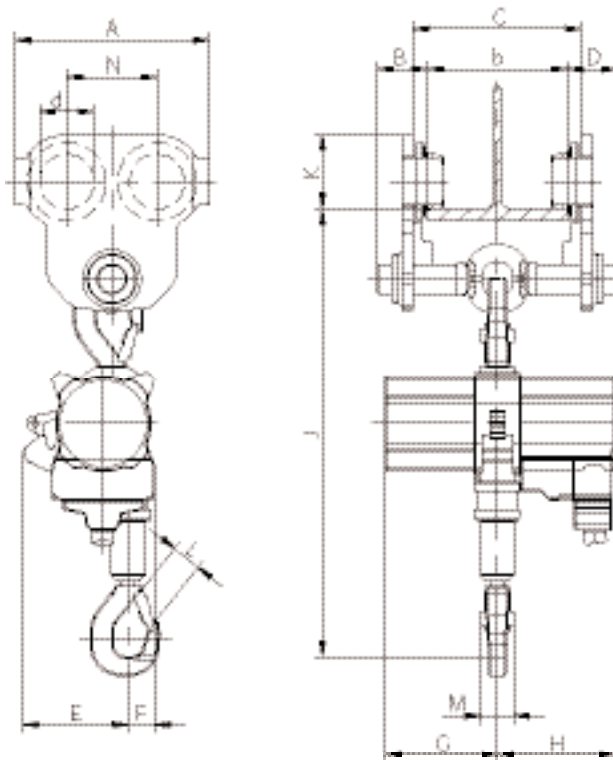
DIMENSIONS

JDN Air Hoist PROFI		025 TI	05 TI	1 TI	2 TI	3 TI	6 TI	10 TI	16 TI
With Trolley		LN 0.5 t		LN 1 t	LN 2 t	LN 3.2 t	LN 6.3 t	LN 10-16 t	
A	inch. mm	10.2 260			12.2 310	11.5 292	19.7 500	19.3 490	
B max.	inch. mm	4.7 119		4.8 122	6.4 162	4.5 113	5.6 141	5.8 146	
C	inch. mm	b + 1.1 b + 28			b + 1 b + 26	b + 2.4 b + 60		b + 2.8 b + 70	
d	inch. mm	2.2 55		2.7 68	3.2 80	3.3 84		6.5 165	
D max.	inch. mm	4.7 119			4.8 122	4.5 113	5.6 141	5.8 146	
E	inch. mm	5.4 137				7.4 187	6.1 154	7.8 197	7.8 199
F	inch. mm	1.5 39			1.8 46		3.1 79	4.3 109	
G	inch. mm	5.7 145				9.2 233		12.1 308	15 382
H	inch. mm	6 152				9.8 250		10.5 267	12.2 310
J* (mounted)	inch. mm	-	-	-	-	25 635	30 763	37.2 944	39.3 997
J* (suspended)	inch. mm	20.9 530			23.5 597	31.4 798	36.2 919	44.5 1131	47.8 1215
K	inch. mm	2.7 67.5		3.2 81.5	3.7 94	4.2 107		7.8 198	
L	inch. mm	1.1 28				1.2 30	1.6 40	1.7 44	2.1 53
M	inch. mm			1.7 42			2 51	2.6 66	3.2 82
N	inch. mm	5.1 130			5.9 150	5.4 136		9.3 236	

* Chain containers increase the hoist headroom



PROFI 1 TI in Manual Trolley



J.D. NEUHAUS
powered by air!

PROFI in Reel Chain Trolley (LH)

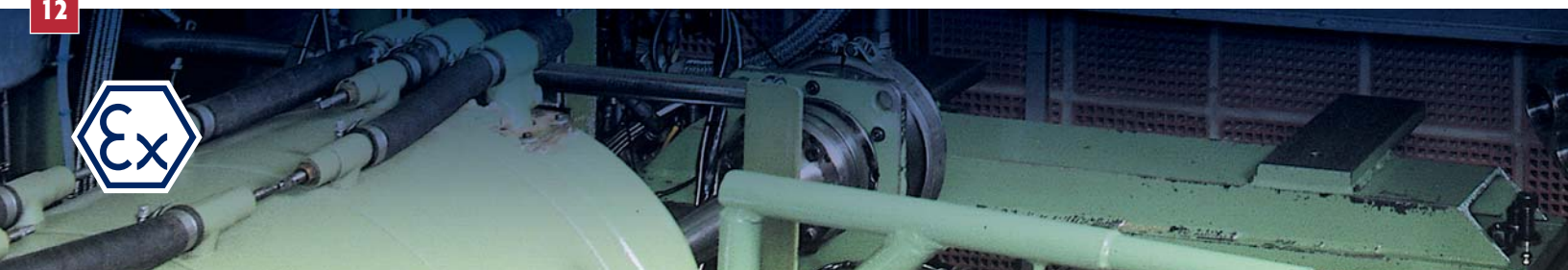
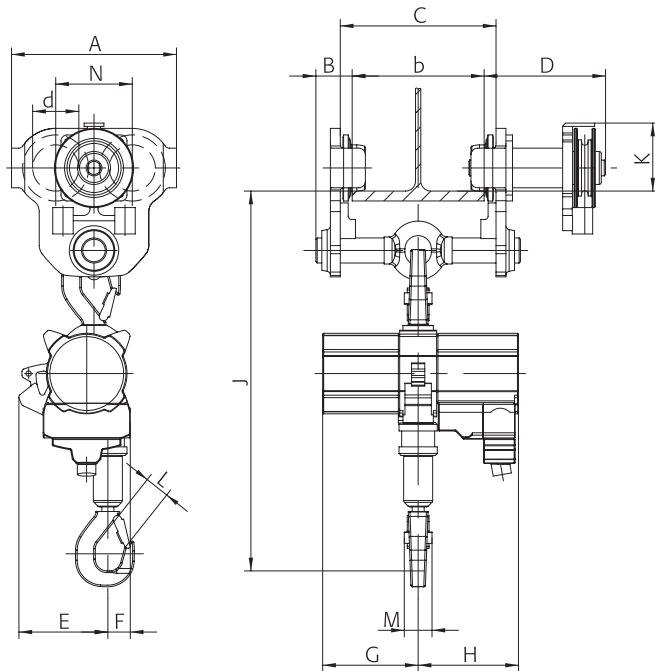
DIMENSIONS

JDN Air Hoist PROFI		025 TI	05 TI	1 TI	2 TI	3 TI	6 TI	10 TI	16 TI	20 TI
With Trolley		LH 2 t			LH 3.2 t		LH 6.3 t	LH 10-16 t		LH 20 t
A	inch. mm	9.8 250			11.5 292		19.7 500	19.3 490		23.6 600
B max.	inch. mm	5.1 130			4.5 113		5.6 141	5.8 146		6.1 155
C	inch. mm	b + 1.4 b + 36			b + 2.4 b + 60		b + 2.8 b + 70		b + 2.7 b + 68	
d	inch. mm	2.8 70			3.3 84		6.5 165		7.3 185	
D	inch. mm	11.2 284			11.6 294		12.1 307	12.3 312		12.6 320
E	inch. mm	5.4 137			7.4 187		6.1 154	7.8 197	7.8 199	7.1 180
F	inch. mm	1.5 39			1.8 46		3.1 79	4.3 109		5.3 135
G	inch. mm	5.7 145			9.2 233		12.1 308	15 382	15 382	
H	inch. mm	6 152			9.8 250		10.5 267	12.2 310	12.2 310	
J* (mounted)	inch. mm	- -	- -	- -	- -	25 635	30 763	37.2 944	39.3 997	44.9 1140
J* (suspended)	inch. mm	22.2 563			24.1 611		31.4 798	36.2 919	44.5 1131	47.9 1216
K	inch. mm	4.1 103			4.3 110		7.8 198		8.9 226	
L	inch. mm	1.1 28			1.2 30		1.6 40	1.7 44	2.1 53	2.9 75
M	inch. mm	1.7 42			2 51		2.6 66	3.2 82	3.4 86	
N	inch. mm	4.6 116			5.4 136		9.3 236		10.8 274	

* Chain containers increase the hoist headroom



PROFI 1 TI in Reel Chain Trolley



PROFI in Motor Trolley (LM)

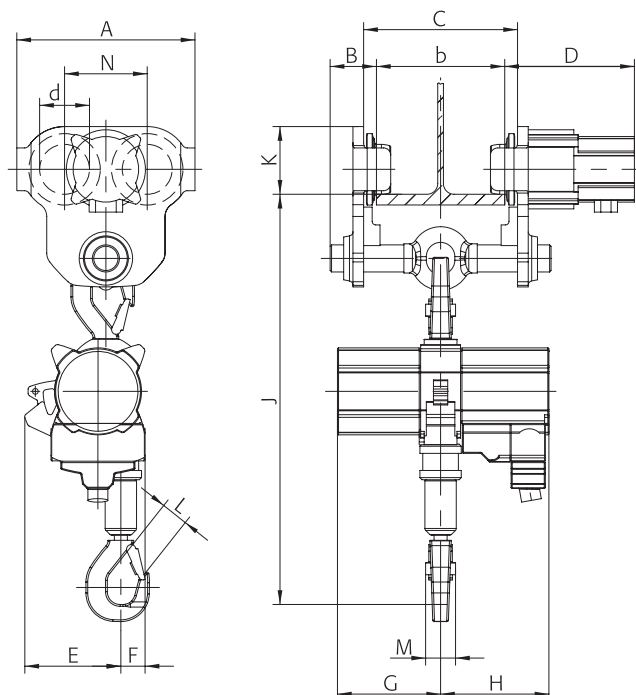
DIMENSIONS

JDN Air Hoist PROFI		025 TI	05 TI	1 TI	2 TI	3 TI	6 TI	10 TI	16 TI	20 TI
With Trolley			LM 2 t			LM 3.2 t	LM 6.3 t	LM 10-16 t		LM 20 t
A	inch. mm		9.8 250			11.5 292	19.7 500	19.3 490		23.6 600
B max.	inch. mm		5.1 130			4.5 113	5.6 141	5.8 146		6.1 155
C	inch. mm		b + 1.4 b + 36			b + 2.4 b + 60		b + 2.8 b + 70		b + 2.7 b + 68
d	inch. mm		2.8 70			3.3 84		6.5 165		7.3 185
D	inch. mm		7.2 183			11.7 297	8.1 205	12.5 318		12.9 328
E	inch. mm		5.4 137			7.4 187	6.1 154	7.8 197	7.8 199	7.1 180
F	inch. mm		1.5 39			1.8 46		4.3 109		5.3 135
G	inch. mm		5.7 145				9.2 233	12.1 308	15 382	15 382
H	inch. mm		6 152				9.8 250	10.5 267	12.2 310	12.2 310
J* (mounted)	inch. mm	- -	- -	- -	- -	25 635	30 763	37.2 944	39.3 997	44.9 1140
J* (suspended)	inch. mm		22.2 563			24.1 611	31.4 798	36.2 919	44.5 1131	47.9 1216
K	inch. mm		3.7 95				4.2 107	8.5 215		8.6 218
L	inch. mm		1.1 28				1.2 30	1.6 40	1.7 42	2.1 55
M	inch. mm		1.7 42				2 51	2.6 66	3.2 82	3.4 86
N	inch. mm		4.6 116				5.4 136	9.3 236		10.8 274

* Chain containers increase the hoist headroom



PROFI 2 TI in Motor Trolley



J.D. NEUHAUS
powered by air!